

Needlepoint for Beginners

Part II

of a three part program

Learning the stitches of:

Basic Seam Stitch
Cross Stitch

2004 – 2005 © Peter Kelley

Basic Description

In Part I students were faced with the “basic problems” of Needlepoint (and needlework in general). In Needlepoint for Beginners: Part II the student’s work will be exposed to the problems that can occur with thread, visual appearance, and canvas condition. Students will also explore thread use that deal with optical illusions both in the designs and colors chosen.

During this program, students will work on a single project.

This program can be attended at the following locations

Scheduling Disclaimer: This program curriculum was originally designed as 7 class session series. Some host sites offer scheduling which differ from this. Students who need more class sessions may re-register for more time at each of these sites.

St Paul Community Education

Contact: Com. Ed. Office: 651 – 293 – 8811
Program Length: 6 Sessions
Registration Fee: \$55.00
Registration Process:
 Deadline: April 11th or June 15th
 Start Dates: April 18th or June 23rd
Location: Como Senior High School
Age Groups: 11 years on up

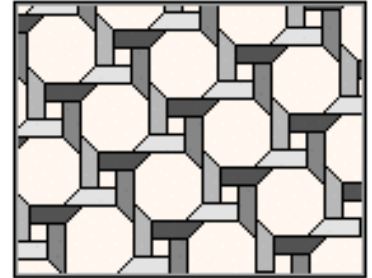
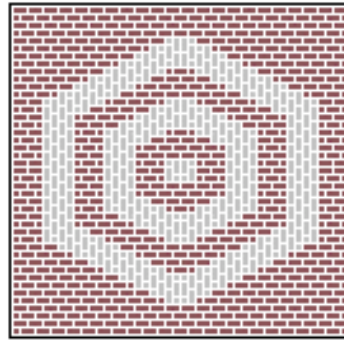
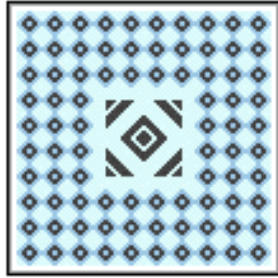
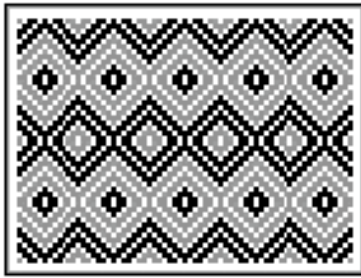
St. Paul Parks and Recreation

Contact: Dir. James Banks: 651 - 298 – 5820
Program Length: 7 Sessions
Registration Fee: \$15.00 + Site Fee
Start Dates: As requested
Location: Scheffer Rec. Center
Age Groups: 11 years on up
This site provides my program on a per request basis.
Call Scheffer Rec. Center to arrange a class

West Hennepin Pioneer Museum Association, Long Lake, MN

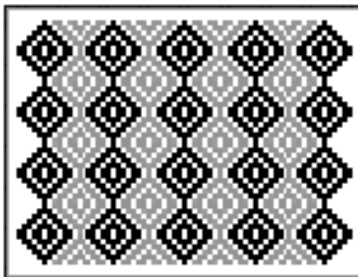
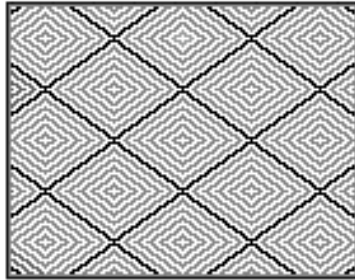
Contact: Museum Office: 925 – 293 – 8811
Program Length: 7 sessions
Registration Fee:
Registration Process:
 Registration Deadlines:
 Registration Start Dates:
Location: Long Lakes, MN
Age Groups: 11 years on up

This site is still being negotiated.
Contact WHPMA for scheduling developments



Detailed Description for Needlepoint for Beginners: Part II

In Part II students continue where they left off in Part I - except in this class the instructor exposes the student's work to numerous production problems that needle workers may have to face. Students should be ready to have their work destroyed even before they begin, while keeping in mind that 90% of the damage will not be seen until the end of this 7-week program!



- ◆ Starting work from either/both pattern center and canvass center.
- ◆ Different thread types and a few techniques of how to use them.
 - Different Thread Weights
 - Doubling and Dividing Thread to change thread weight
 - Multiple Strand Thread
 - Variegated Threads
- ◆ Minor to Severe Problems of:
 - Adjusting Patterns to fit canvas size
 - Accidental Use of Ink
 - Canvas Joining
 - Canvas Patching
 - Cutting Thread to Short
 - Mixing Thread Types (cotton, wool, silk, ...)
- ◆ Presentation of Needlework
 - Cleaning
 - Blocking
 - Framing
- ◆ During this program, students will work on a single project.

Program Syllabus

There is no syllabus for this program. Subject matter will be presented intermittently over the 7 weeks of the program.

Program Completion

The student completes this program after they reach both of the following points:

- ◆ When the project is completed.
- ◆ After the Student has washed, blocked and re-examined their work for the damage that was added to the project over the 7 weeks.
- ◆ After the student has had a critique of their work in the classroom setting.

Needlepoint Part II Supply List

If materials are not provided by the training site, the attendees will need to gather the following materials for this program. The materials listed below can be gathered from a variety of stores: embroidery, or yarn shops; quilting, or sewing shops; craft stores, office supply stores, post offices, and UPS stores; hardware stores, or paint suppliers. Attendees are responsible for keeping track of their own supplies once they are given to them.

- ◆ Stitching handouts from Part I.
- ◆ Two canvas' that are between 7 to 12 count; preferably 10 count. Two canvas' 201 stitches x 110 stitches.
 - 1 piece of scrap canvass
 - Prepare your canvass before you arrive.
- ◆ One pair of cleaning gloves; water resistant.
- ◆ One 12 inch or 18 inch ruler.
- ◆ Two Needles
- ◆ Thread List (see "Definition of Skein" below)
 - Bring your remaining yarn / thread from Part I.
 - Several skeins of non-4 ply yarn: 3 skeins must be a solid color and 1 skein must be a variegated / ombre / multi colored thread.
 - This thread must not be 4 ply, 5 ply, or 6 ply threads. Options include but not limited to:
 - 1 ply, 2 ply, 3 ply, or "half ply" worsted yarn or threads (half ply thread is sewing thread; the finer the thread the more thread you will need)
 - Woven threads
 - "Metallic" and "Ruby" colored threads
 - Crochet thread
 - Embroidery Floss
 - 4 to 8 skeins of the same color (check sleeve numbers to make sure)
 - Single strand or multiple ply types
 - Braided or unbraided forms
 - These supplies may be shared between attendees
- ◆ One of the following (The storage tub can be used in place of item 1 or 2 from the list below):
 - One corrugated box end having a circumference between 2 and 3 feet, and cut 4 to 6 inches from the bottom of box.
 - One rectangular cutting board (approximate size: 12 inches x 6 inches x 1/2 inch thick or greater in size)
 - EITHER: A plastic storage tub (approximate size: 6 inch deep x 18 inch) ... OR ... a carrying bag for your work and supplies.

Additional Notes

- The instructor suggests that the thread for Part II be from one family of color based on the remaining thread from Part I. Colors must be distinct but not necessarily hue, tint, and shade.
- Other materials will be used but will be provided by the instructor and site.

Definition of the word "Skein":

- When used with yarn: 1 Skein = approximately 220 yards.
- When used with embroidery floss or thread: Manufacturers vary widely as to how much thread they sell per "skein". A skein may mean 8 or more feet. Students should bring approximately 32 to 64 feet, or somewhere between 4 to 8 skeins of embroidery floss.
- Sewing thread comes in "spools" and generally comes in 150 to 200 yard lengths. If choosing sewing thread bring 3 to 4 spools.

Canvas Preparation Instructions

- Prepare both canvas' with the same set of borders:
- Your border marks need to be on both short sides and one of the longer sides; 3 inches in or about 3 times the count of your canvas.
- On the second of the longer sides, count 10 squares in a draw a guideline.
- Remember to tape your edges.

